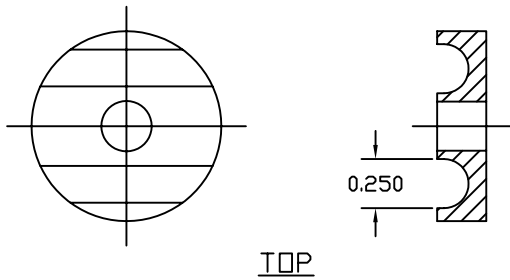
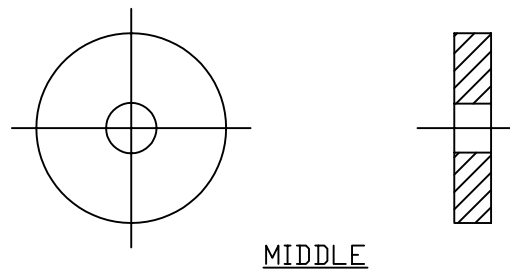


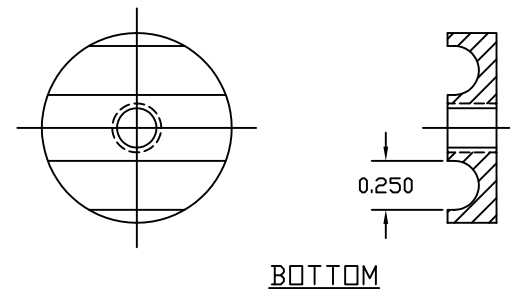
PARTS ARE
TIN PLATED



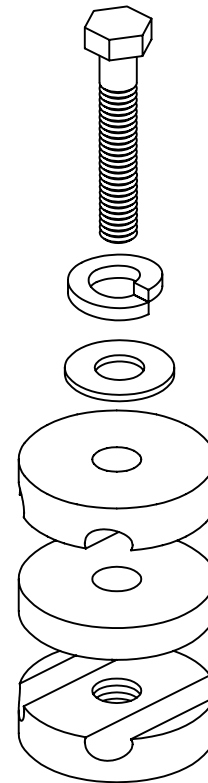
TOP



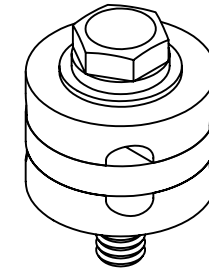
MIDDLE



BOTTOM



ASSEMBLY



COMPUTER ROOM GROUND CLAMP

EST. WEIGHT 0.16 LBS

APPROVED

AS DRAWN: _____
 AS NOTED: _____
 DATE: _____

THIS DOCUMENT AND THE CONTENTS THEREOF IS THE PROPERTY OF HARGER INC., AND IS FURNISHED TO YOU FOR INFORMATION ONLY. THE INFORMATION CONTAINED HEREIN IS CONFIDENTIAL AND OF A PROPRIETARY NATURE AND MUST NOT BE DISCLOSED TO THIRD PARTIES WITHOUT THE EXPRESS WRITTEN APPROVAL OF HARGER INC.

B	ADDED H5 TAP NOTE	081704	EHS
A	WAS 0.217 LBS OF R31/32RDBR	082602	EHS
LET	REVISION	DATE	BY
TOLERANCES UNLESS NOTED:		3RD ANGLE PROJECTION	
FRACTIONAL	+/- 1/16		
.00	+/- .030		
.000	+/- .010		

PART NO. CRGC4
 COMPUTER ROOM GROUND CLAMP FOR #4 AWG WIRE

DRAWN BY:
EHS
 CHECKED BY:
-
 DATE:
122701



301 ZIEGLER DRIVE
 GRAYSLAKE, IL 60030
 (847) 548-8700

REVISION:
B
 SCALE:
FULL
 SHEET:
1 OF 1