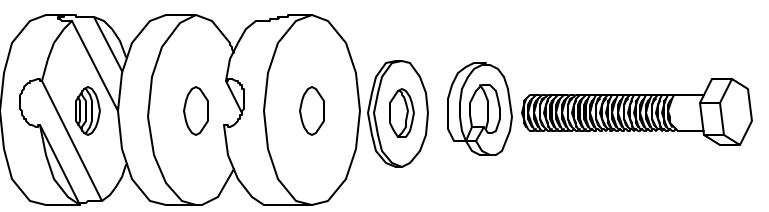
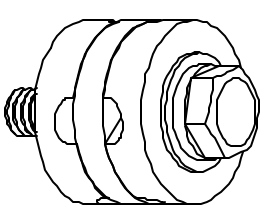
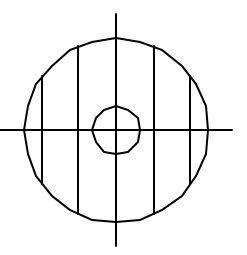


PARTS ARE
TIN PLATED

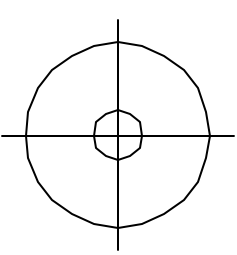
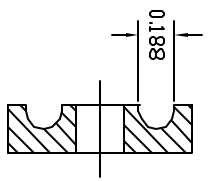


ASSEMBLY

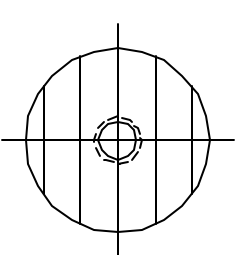
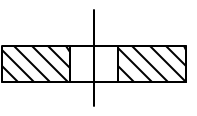
COMPUTER ROOM GROUND
CLAMP



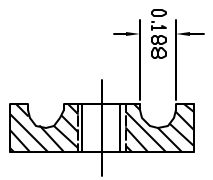
TOP



MIDDLE



BOTTOM



EST. WEIGHT 0.16 LBS

APPROVED

AS DRAWN:

AS NOTED:

DATE:

THIS DOCUMENT AND THE CONTENTS THEREOF IS THE PROPERTY OF HARGER INC., AND IS FURNISHED TO YOU FOR INFORMATION ONLY. THE INFORMATION CONTAINED HEREIN IS CONFIDENTIAL AND OF A PROPRIETARY NATURE AND MUST NOT BE DISCLOSED TO THIRD PARTIES WITHOUT THE EXPRESS WRITTEN APPROVAL OF HARGER INC.

-	-	-	-	-	-
-	-	-	-	-	-
C	WEIGHT WAS 2.17#	082602	EHS	-	-
B	UPDATED DWG	010301	LAL	-	-
A	SCREW WAS CS48S	052599	LAL	-	-
LET	REVISION	DATE	BY		
TOLERANCES UNLESS NOTED:		3RD ANGLE		PROJECTION	
FRACTIONAL		+/- 1/16		-	
.00		+/- .030		-	
.000		+/- .010		-	

PART NO. CRGC6
COMPUTER ROOM GROUND CLAMP FOR #6 AWG WIRE

DRAWN BY: LAL	CHECKED BY: -	DATE: 091197	REVISION: C
			SCALE: FULL
301 ZIEGLER DRIVE GRAYS LAKE, IL 60030 (847) 548-8700			SHEET 1 OF 1