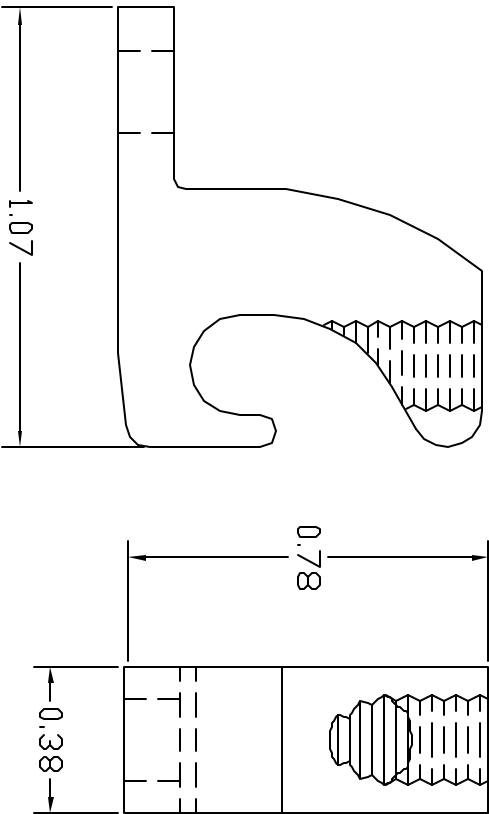


WIRE RANGE: 4 TO 14 AWG
 MATERIAL: ELECTROLYTIC COPPER
 FINISH: TIN PLATE
 RATING: DIRECT BURIAL



TINNED CU LAY-IN LUG

EST. WEIGHT 0.0625 LBS

PART NO. TCLI414DB

APPROVED

AS DRAWN: _____
 AS NOTED: _____
 DATE: _____

THIS DOCUMENT AND THE CONTENTS THEREOF IS THE PROPERTY OF HARGER INC., AND IS FURNISHED TO YOU FOR INFORMATION ONLY. THE INFORMATION CONTAINED HEREIN IS CONFIDENTIAL AND OF A PROPRIETARY NATURE AND MUST NOT BE DISCLOSED TO THIRD PARTIES WITHOUT THE EXPRESS WRITTEN APPROVAL OF HARGER INC.

LET	REVISION	DATE	BY
-	-	-	-
-	-	-	-
-	-	-	-
-	-	-	-
-	-	-	-
-	-	-	-
-	-	-	-
-	-	-	-
-	-	-	-

DRAWN BY: BK			301 ZIEGLER DRIVE GRAYS LAKE, IL 60030 (847) 548-8700
CHECKED BY: _____			
DATE: 082605		REVISION: -	SCALE: 2X
		SHEET: 1	OF: 1